



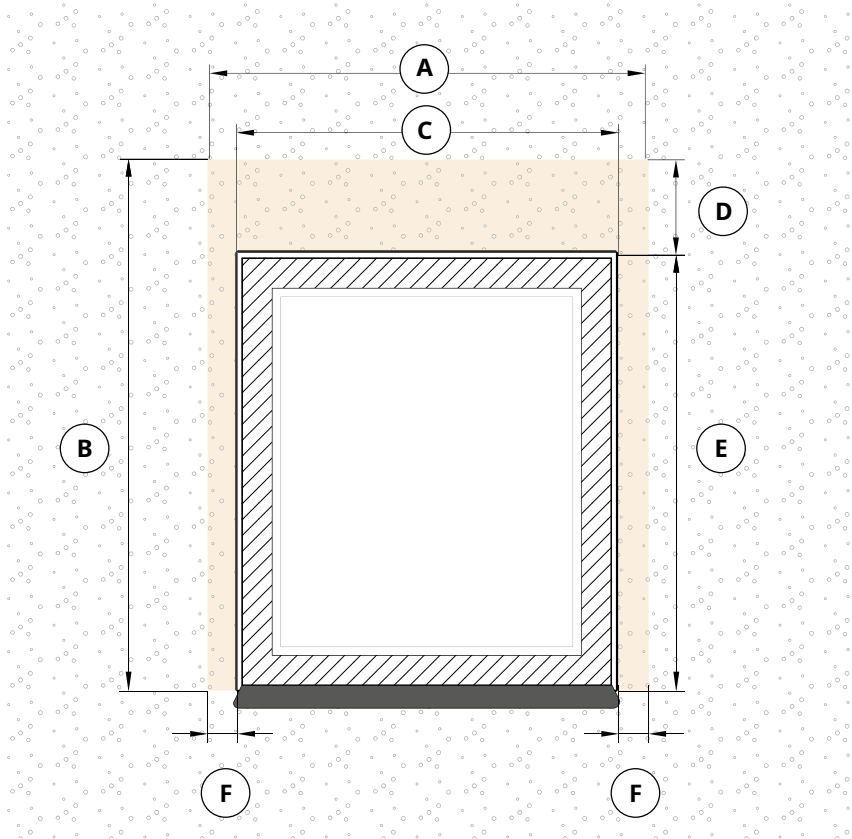
## External roller shutters dimensioning instructions



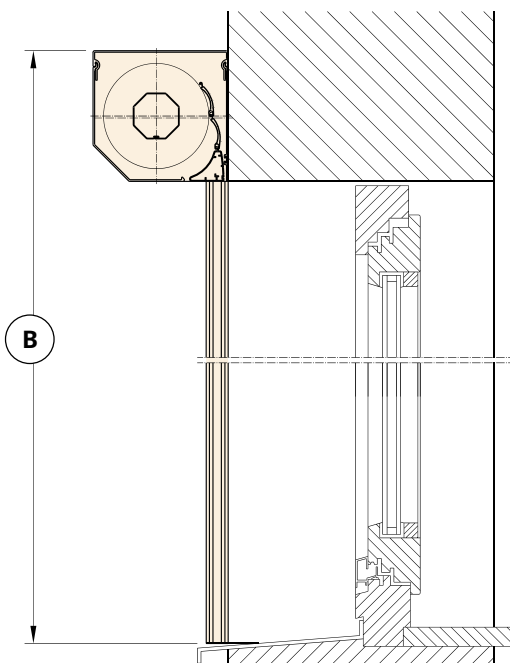
**SK, SK+MKT**

# External roller shutter on the wall installation

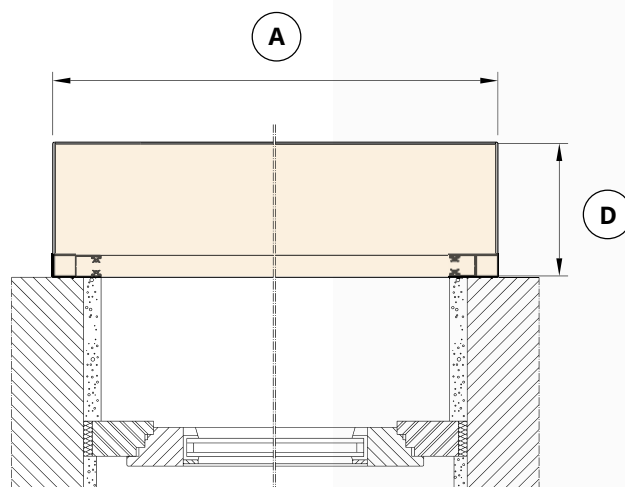
The facade-mounted roller shutter with SK or SK+MKT straight guides is designed for installation in window openings on external walls, suitable both for new construction and for already existing buildings.



1. Window recess seen from the front



2. Window recess seen from the side



3. Window recess seen from above

## A - BOX WIDTH

(This dimension should be entered in the "width" field in our configurator) It is the total width of the roller shutter together with the guides.

## B - SHUTTER HEIGHT

(This dimension should be entered in the "height" field in our configurator) It is the total height of the roller shutter, the box and the guides.

## C - WINDOW RECESS WIDTH

If the width of the recess is not the same at all points, the smallest recess dimension should be taken.

## D - BOX HEIGHT

It is the height of the box without the guides, the height depends on the total size of the roller shutter, and its dimensions range from 139mm - 207mm. See the table below „Maximum dimensions of boxes“

## E - WINDOW RECESS HEIGHT

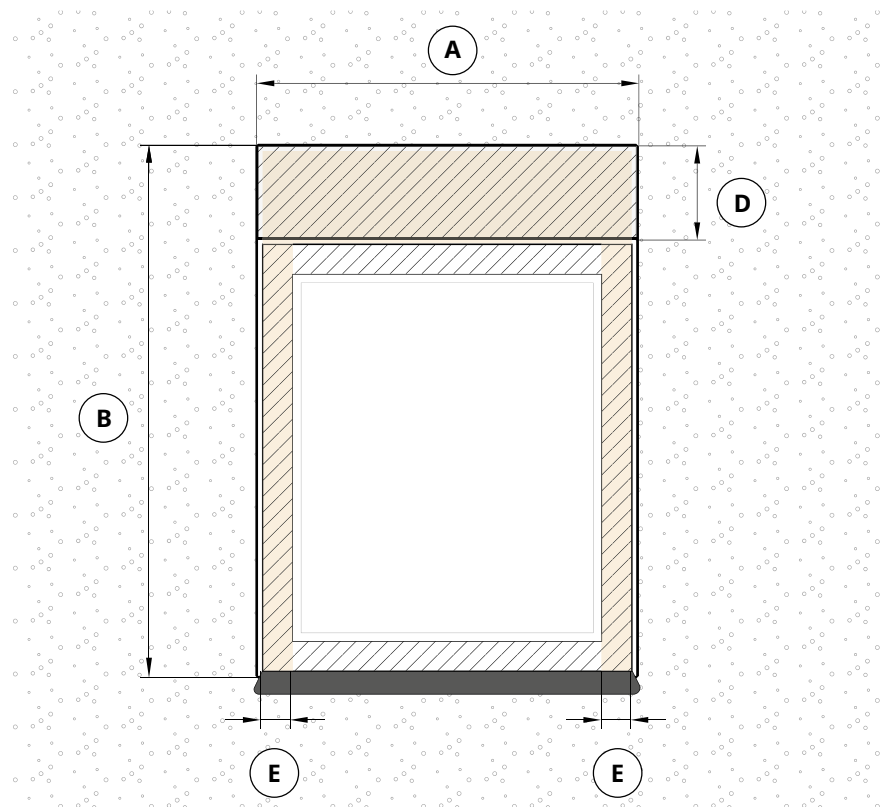
If the height of the recess is not the same at all points, the smallest recess dimension should be taken.

## F - GUIDE WIDTH

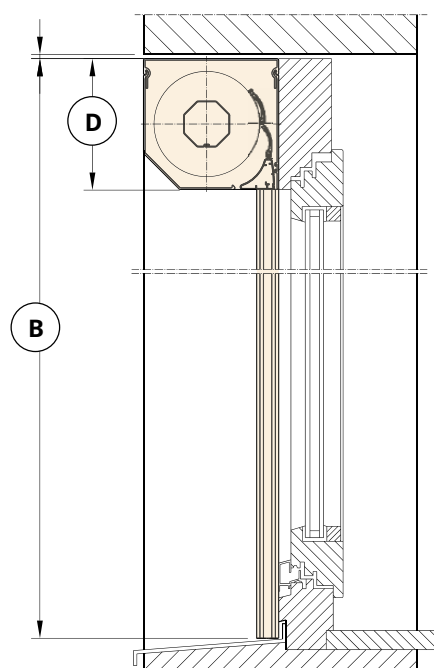
All models of guides have the same 53mm width.

# External roller shutter in window recess installation

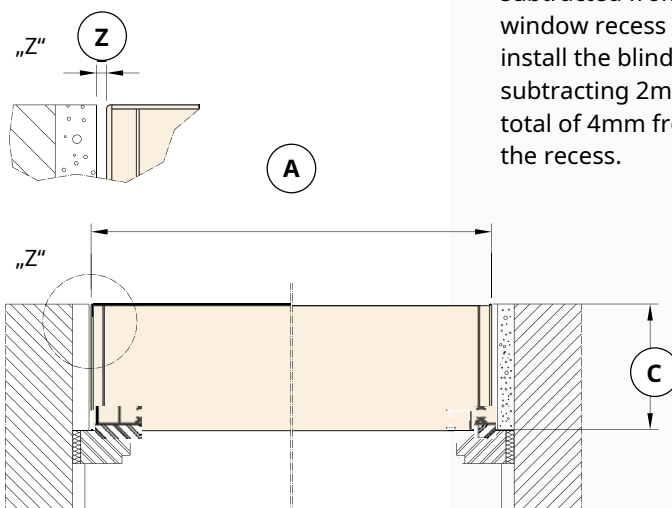
The window recess roller shutter with SK or SK+MKT straight or angular guides is designed for installation inside the window opening and is suitable for both new builds and existing buildings.



1. Window recess seen from the front



2. Window recess seen from the side



3. Window recess seen from above

## A - WINDOW RECESS WIDTH

(This dimension should be entered in the "width" field in our configurator, taking into account the distance Z) If the width of the recess is not the same at all points, the smallest recess dimension should be taken.

## B - WINDOW RECESS HEIGHT

(This dimension should be entered in the "height" field in our configurator) If the height of the recess is not the same at all points, the smallest recess dimension should be taken.

## C - WINDOW RECESS DEPTH

The depth of the window recess is the dimension that should be taken into account when selecting the size of the box, the dimensions of the boxes range from 139mm – 207mm. See the table below  
**"dimensions of boxes"**

## D - BOX HEIGHT

This is the height of the box without guides, the height depends on the total size of the roller shutter and its dimensions range from 139mm - 207mm. See the table below  
**"box dimensions"**

## E - GUIDE WIDTH

All models of guides have the same 53mm width

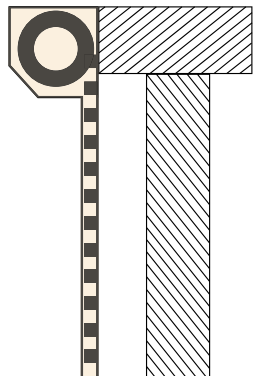
## Z - DISTANCE

This is the distance that should be subtracted from the width of the window recess in order to freely install the blind. We recommend subtracting 2mm on each side for a total of 4mm from the width of the recess.

# Type of roller shutters

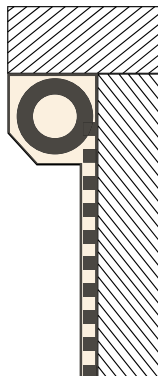
## TYPE A

on the facade, counter-clockwise



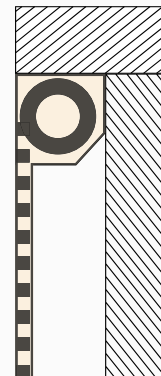
## TYPE B

in the recess, counter-clockwise



## TYPE C

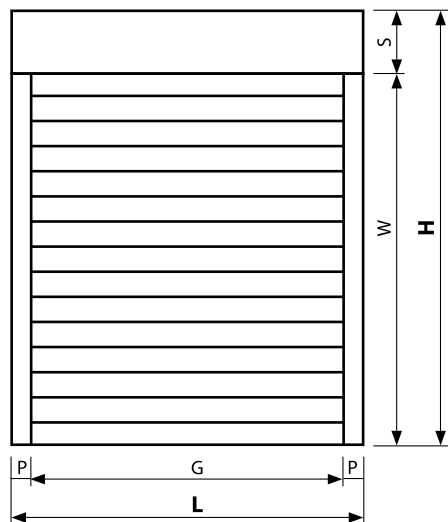
in the recess, clockwise



## Dimensioning of the roller shutter depending on the method of installation

### TYPE A

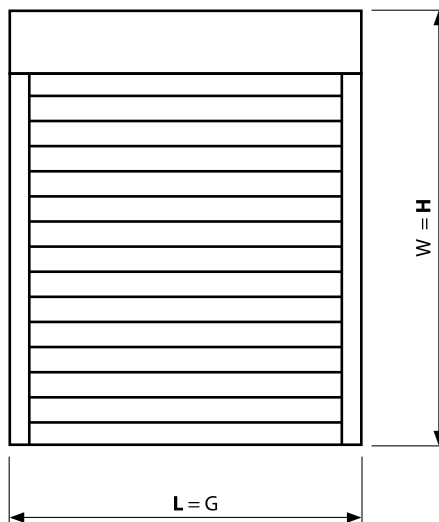
The roller-blind mounted on the facade, straight guides.



shutter width:  $L = G + (2 \times P)$   
shutter height:  $H = W + S$

### TYPE B and C

The blind is mounted in the window recess with angular or straight guides.

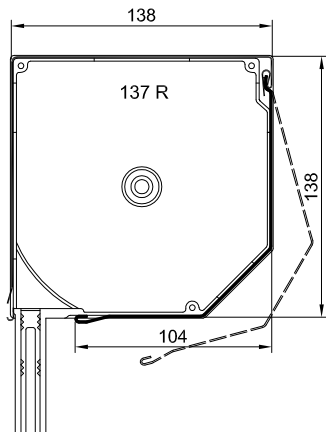


shutter width:  $L = G$   
shutter height:  $H = W$

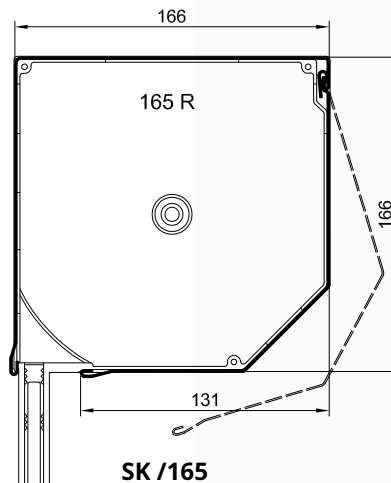
- L - TOTAL WIDTH OF THE SHUTTER**
- G - WINDOW RECESS WIDTH**
- P - GUIDE WIDTH**  
(depending on the type of guides used - see types of guides)
- H - TOTAL HEIGHT OF SHUTTERS**
- W - WINDOW RECESS HEIGHT**
- S - SHUTTER BOX HEIGHT**

*If the width and height of the recess is not the same at all points, the smallest recess dimension should be taken or the opening should be appropriately corrected.*

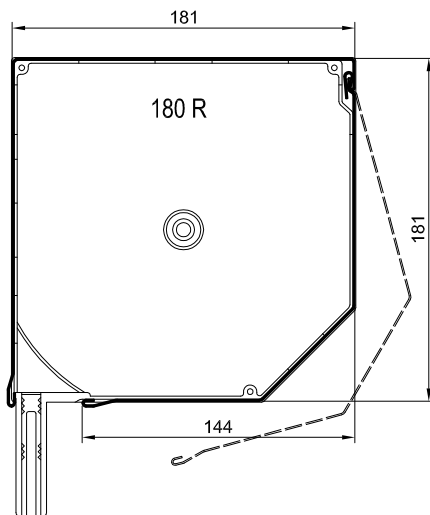
# Boxes and side covers



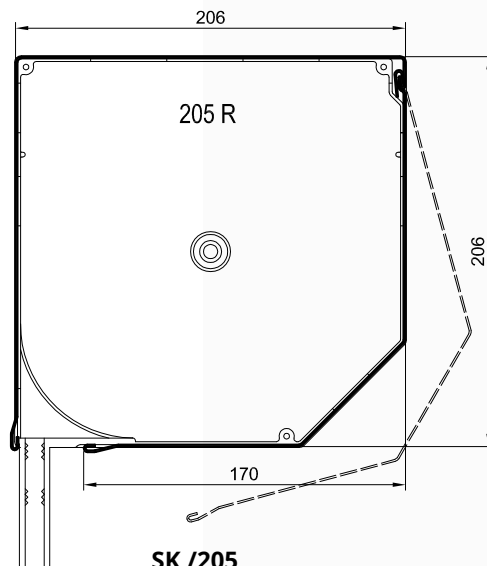
**SK /137**



**SK /165**



**SK /180**

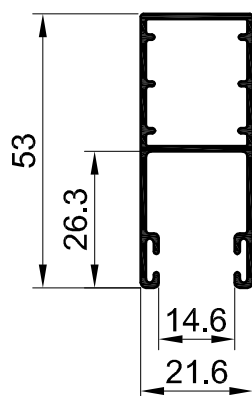


**SK /205**

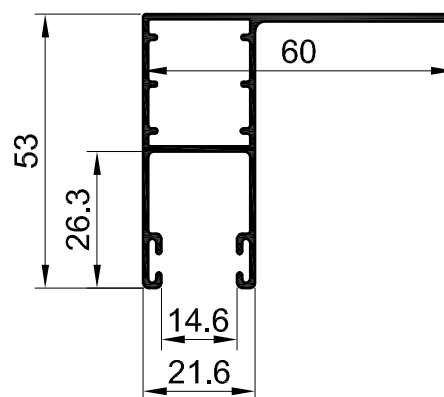
## Maximum dimensions of boxes

TOTAL SHUTTER HEIGHT FOR PROFILE PA39					
Box type	The height of the box	The width of the box	Roller SK	Roller SK with a motor	Roller SK + MKT
137	139 mm	137 mm	to 1560 mm	to 1440 mm	-
165	167 mm	165 mm	to 2390 mm	to 2280 mm	to 1500 mm
180	183 mm	180 mm	to 2950 mm	to 2790 mm	to 2300 mm
205	207 mm	205 mm	to 4320 mm	to 4050 mm	to 2400 mm

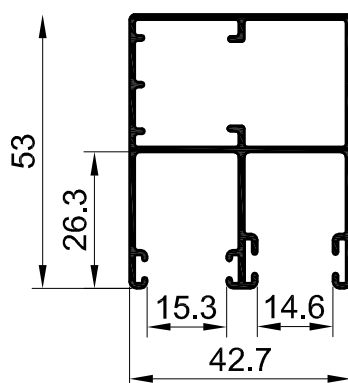
\*MKT - mosquito net



**STRAIGHT GUIDE**  
**PP 53**

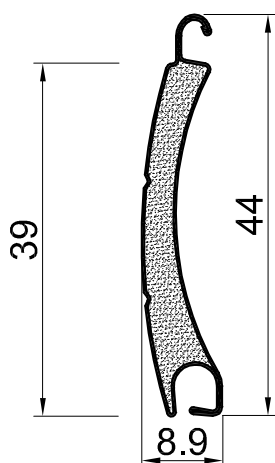


**ANGULAR GUIDE**  
**PK 53**

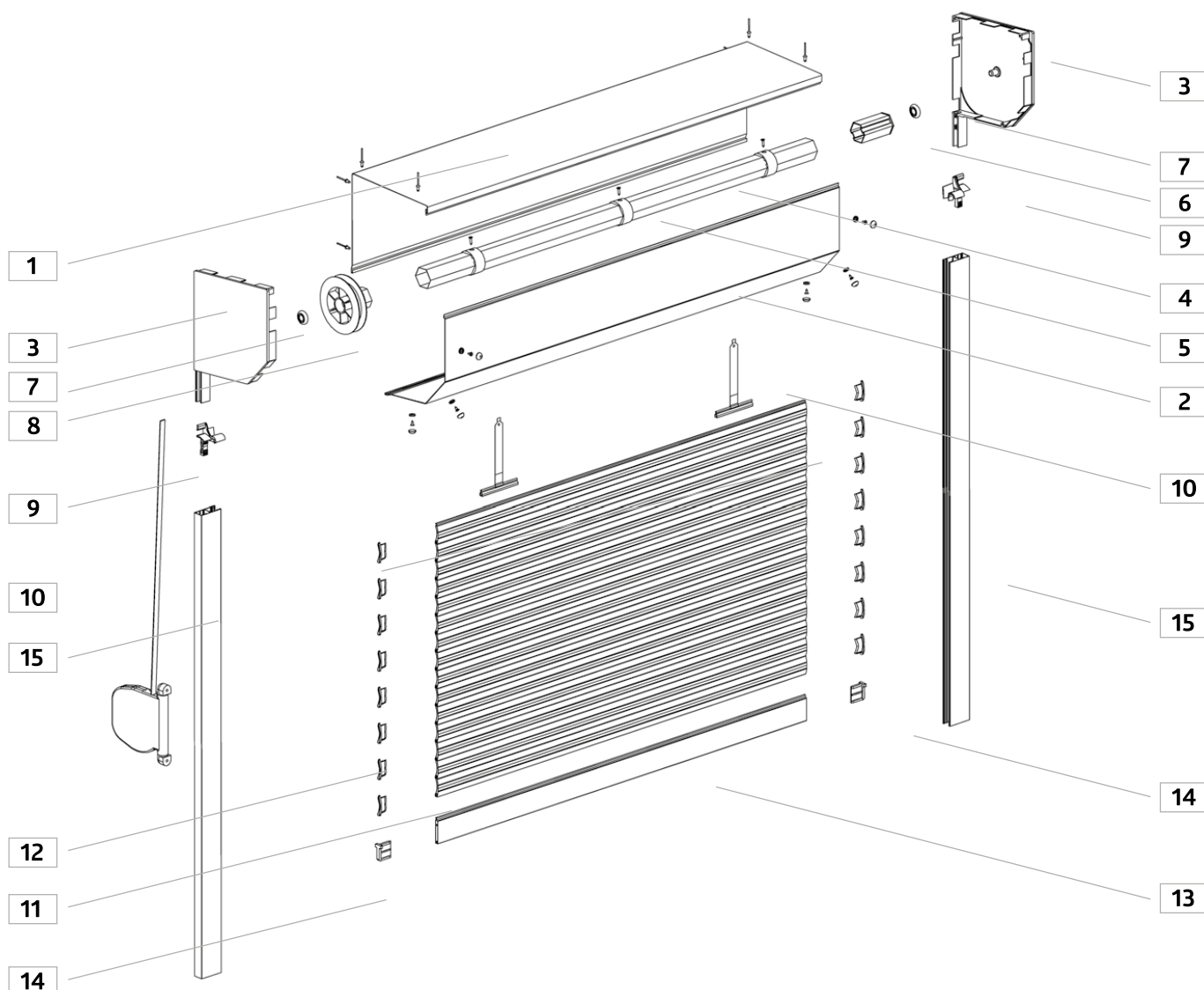


**DOUBLE GUIDE**  
**PPDO 53**

## Profile **PA39**



# Components of external roller shutters



- 1. SK / 11 - ROLLER BOX TOP
- 2. SK / 21 - ROLLER BLIND BOX BOTTOM
- 3. BS 45 BOX SIDE COVER
- 4. OCTAGONAL PIPE
- 5. ADAPTING RING
- 6. HOLDER
- 7. BEARING
- 8. WINDING WHEEL
- 9. THE LAMELAE SLIDER IN THE GUIDE

- 10. HANGER
- 11. ROLLER BLIND CURTAIN OF ALUMINUM PROFILE
- 12. PROFILE PLUG
- 13. BOTTOM STRIP
- 14. BOTTOM STRIP PLUG
- 15. GUIDE